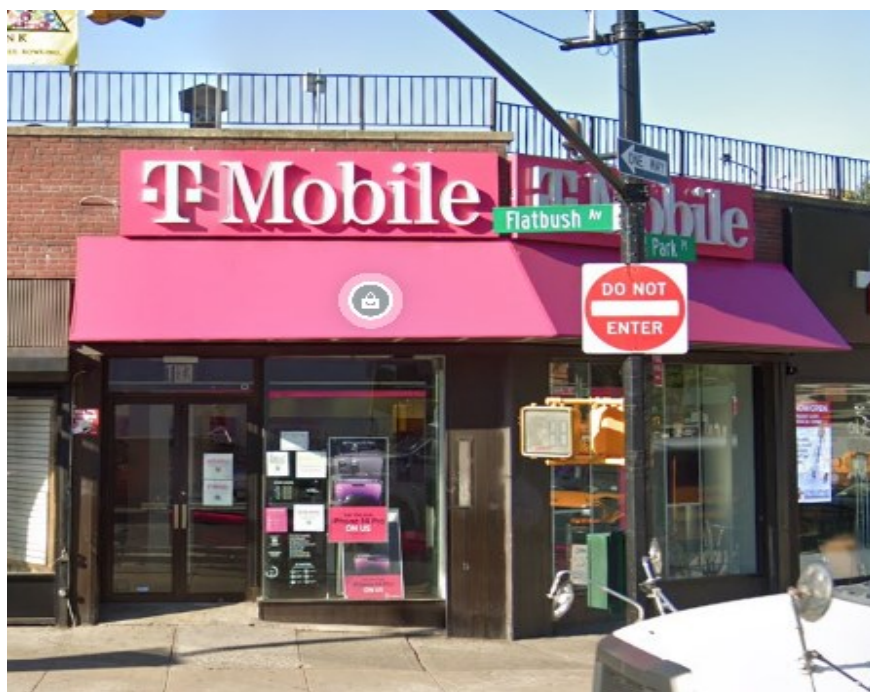


# SOLIL MANAGEMENT

## 304 FLATBUSH AVENUE

BETWEEN PARK PLACE & STERLING PLACE  
BROOKLYN, NY



**SIZE:**  
2,800 SF—  
GROUND FLOOR

**CEILING HEIGHT:**  
APPROX. 10'

**FRONTAGE:**  
APPROX. 20'

**PREVIOUS TENANT:**  
T-MOBILE

**POSSESSION:**  
IMMEDIATE

### **ADDITIONAL INFORMATION:**

- IDEAL FLATBUSH AVENUE LOCATION
- LOCATED AT THE B & Q TRAIN ENTRANCE
- HIGH FOOT TRAFFIC



### **CONTACT INFORMATION:**

NICHOLAS FORELLI  
(212) 506-0448  
NF@SOLIL.COM  
WWW.SOLIL.COM

1185 SIXTH AVENUE, 10TH FLOOR, NEW YORK, NY 10036