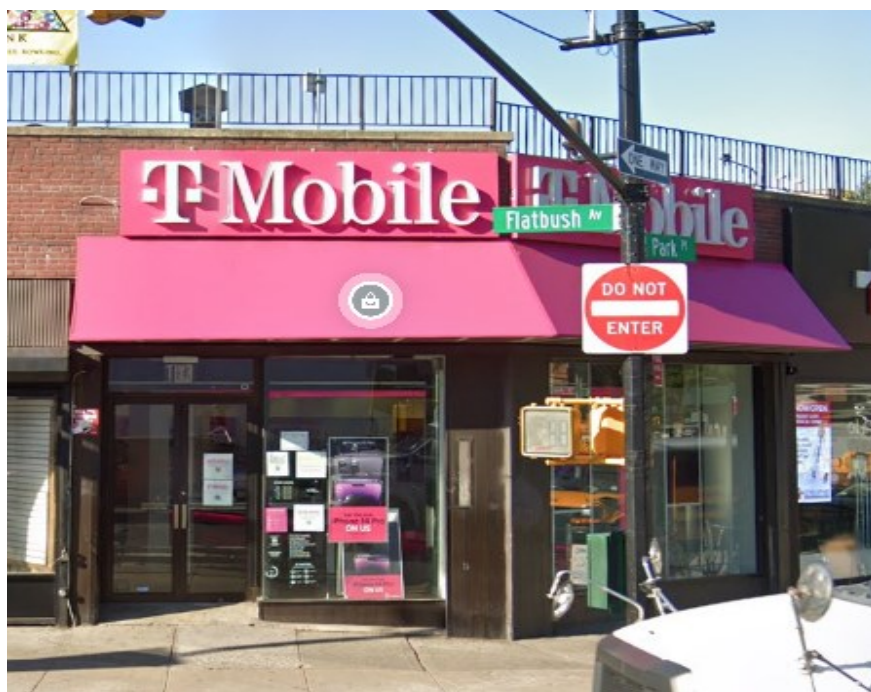


SOLIL MANAGEMENT

304 FLATBUSH AVENUE

BETWEEN PARK PLACE & STERLING PLACE



SIZE:

2,700 SF—
GROUND FLOOR

CEILING HEIGHT:

APPROX. 10'

FRONTAGE:

APPROX. 20'

CURRENTLY:

VACANT

POSSESSION:

IMMEDIATE

ADDITIONAL INFORMATION:

- IDEAL FLATBUSH AVENUE LOCATION
- LOCATED NEAR THE B & Q TRAINS
- HIGH FOOT TRAFFIC



CONTACT INFORMATION:

NICHOLAS FORELLI

(212) 506-0448

NF@SOLIL.COM

WWW.SOLIL.COM

1185 SIXTH AVENUE, 10TH FLOOR, NEW YORK, NY 10036