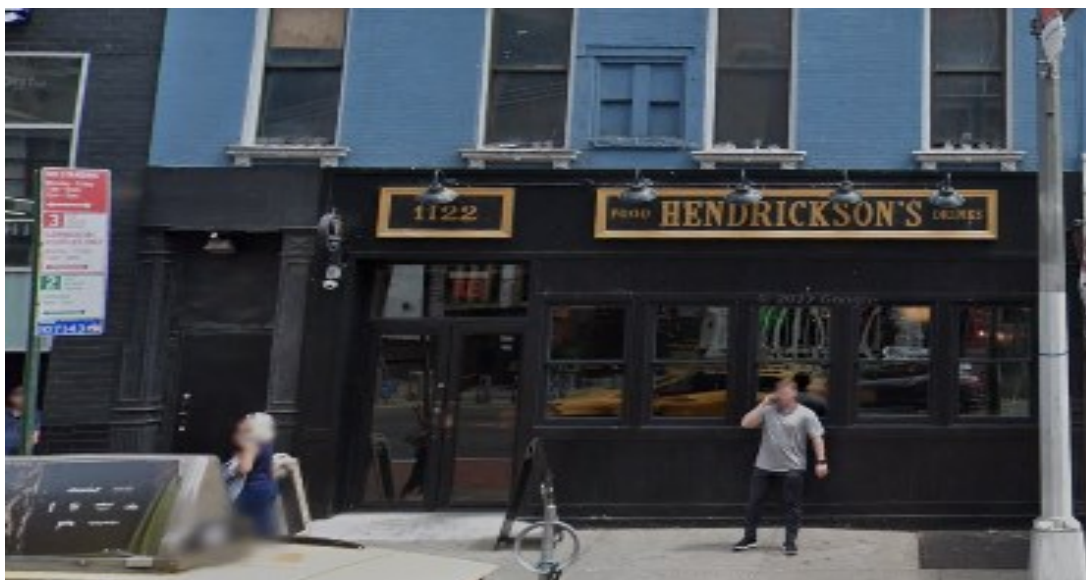


SOLIL MANAGEMENT

1122 FIRST AVENUE

BETWEEN 61ST & 62ND STREETS
UPPER EAST SIDE, NY



SIZE:

1,980 SQ FT
GROUND FLOOR

780 SQ FT
BASEMENT

CEILING HEIGHT:

APPROX. 11'

FRONTAGE:

APPROX. 22'

POSSESSION:

ARRANGED

CURRENTLY:

HENDRICKSON'S

ADDITIONAL INFORMATION:

- HIGH FOOT TRAFFIC AREA
- LOCATED NEAR THE F, Q, R, 4, 5, 6, N & W TRAINS



CONTACT INFORMATION:

NICHOLAS FORELLI

(212) 506-0448

NF@SOLIL.COM

WWW.SOLIL.COM

1185 SIXTH AVENUE, 10TH FLOOR, NEW YORK, NY 10036